

TuneECU Android

WARNING: Using this software may void your manufacturer warranty

Use of this software is at your own risk, no guarantee is implied or given, either by the author(s) of this software, nor the website administrator. !!!!!!!!!!!

!! Damages of any kind caused by the use of this software are your own responsibility. !!

This addendum applies only to the function available on the Android version of TuneECU.
Refer to the manual TuneECU for additional information.

TuneECU for Android is available on the Play Store Google.

For safety ! - Download the Android software exclusively on Google Play Store.

1. Introduction

TuneECU for Android is a software for reprogramming, diagnostics and testing of the engine control unit (ECU) fitted to some motorcycles from Triumph, KTM, Aprilia, Benelli & Ducati.

TuneECU for Android only to be used on these models

Date of information

• Triumph Daytona 675, only up to VIN # 564947/ via cable & Bluetooth*	August 2014
• Triumph Daytona 675, from VIN # 564948/ * bluetooth connection only.	August 2014
• Triumph Street Triple & Street Triple R, only up to VIN # 560476/ via cable & Bluetooth*	August 2014
• Triumph Street Triple & Street Triple R, from VIN # 560477/ * bluetooth connection only.	August 2014
• Triumph Speed Triple 885, 955, 1050 & 1050 R (including models 2013) / via cable & Bluetooth*	August 2014
• Triumph Tiger 800/800XC, 885 (900), 955, 1050 & Tiger Sport (including models 2014) / via cable & Bluetooth*	August 2014
• Triumph Explorer / * bluetooth connection only.	August 2014
• Triumph 955 Sprint ST/RS and 1050 Sprint ST/GT (up to model year 2013) / via cable & Bluetooth*	August 2014
• Triumph Daytona T595/955i Daytona (all models) / via cable & Bluetooth*	August 2014
• Triumph Rocket III (including models 2014) / via cable & Bluetooth*	August 2014
• Triumph Daytona 600, 650, Speed Four, TT600 (all models) / via cable & Bluetooth*	August 2014
• Triumph Thunderbird (1600 & 1700 cc) / via cable & Bluetooth* / except Commander and LT	August 2014
• America, Bonneville, Scrambler, Speedmaster, Thruxton (including models 2014) / via cable & Bluetooth*	August 2014
• KTM 990 LC8 & 1190 RC8 (including models 2012) / via cable & Bluetooth*	August 2014
• KTM 690 Duke (including models 2011) / via cable & Bluetooth* (except all Duke 4 models)	August 2014
• KTM 690 SMC & Enduro / 690 Supermoto (including models 2013) / via cable & Bluetooth*	August 2014
• Aprilia Caponord and Futura RST/ via cable & Bluetooth*	August 2014
• Benelli Tornado / via cable & Bluetooth*	August 2014
• Ducati 848, 1098, 1198, Hypermotard 1100, Monster S2R 800 / 1000 (ECU 5AM)	Februar 2015

Ducati models are supported only by TuneECU for Android, version 2.2 or higher.

*With Bluetooth connection, reading and reprogramming map functions are not available.

Configuration required :

- Smartphone or Tablet Android version 4.0 minimum, dual Core 1.2 Ghz mini.
- Cable USB OBD2 FTDI (The cable is the same as the windows version)
The USB-TuneBoy-cable, is not supported by TuneECU for Android.
- Adapter USB/micro (cable OTG) if needed
- Optional: Interface Bluetooth ELM327, as of version 1.4.

Devices tested:

- Samsung S2
- Samsung S3
- Samsung S4
- Acer A501
- Samsung Galaxy Tab 3 (8 & 10")
- Samsung Galaxy Tab 3 -- 7" (Bluetooth only)
- SamsungGalaxy Note3
- Sony Xperia Z
- Asus me371
- Medion LifeTab S7852

This is not an exhaustive list.

Adapters Bluetooth tested:

- **OBDDKey 140**
- **Vgate V1.5 Mini OBD2 MY-OBDD Shop (Germany)**
- **Mini ELM327 (China Adapter) Ebay USA (out of stock)**
- **OBDDLink LX**
- **BMWhat v1.5 Bluetooth Adapter**

This is not an exhaustive list.

1.2 Installation:

- TuneECU is available on the Play Store Google.
- A folder TuneECU is created during the TuneECU installation. The maps need to be copied on that folder for later use.

1.3 Utilization:

- Connect the cable OBD (with adapter if needed) to the Android device and to the ECU.
- Open TuneECU and authorize the app to access the USB accessory
- A connection with an Bluetooth OBD Adapter ELM327(Version 1.4+) can be used but not all functions of the software will be available.

The software has 3 screens: Map, Diagnostics and Adjustments. To switch between screens, swipe the screen from left to right or vice versa. In "Map" mode, with a map open, the different tables can be displayed by swiping the screen up or down. From the "F" or "I" screen, the corresponding corrections F Trim table can be displayed by swiping towards the right.

ECU Connection :

- Connect the cables
- Turn on the ignition
- In the "ECU" menu, select "Connect". The light in the bottom right corner starts blinking:
 - Red – Initiating Connection to the ECU
 - Yellow – authentication
 - Green – Connection established

With the Bluetooth interface the LED blinks first in Blue showing the status of the connection with the Bluetooth device.

The three main screens:

Map Screen:



Menu "ECU"

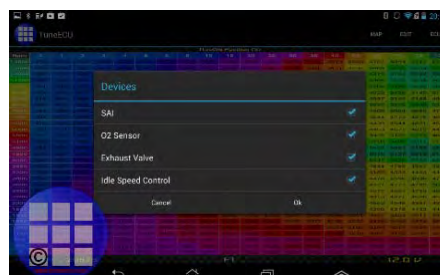
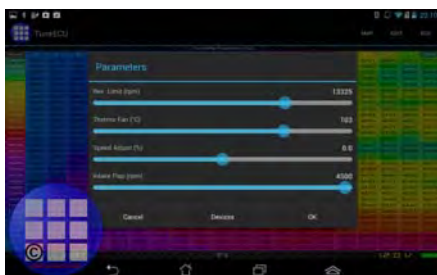
- Connect / Disconnect : Connect or disconnect to the ECU.
- Read Map: Read the map from the ECU
- Reprogram: Write the map loaded in TuneECU to the motorcycle ECU. <<BE CAREFUL!>>
- Information: Information about the ECU (VIN, Serial number, Map number)

Menu "EDIT"

- Modify Table: Change of the characteristic maps in the tables.
- Copy / Paste: Copy or Paste the entire table.
- Graphic Mode : Graphical or Numeric table display.
- F Trim global : Use the F Trim table for all « F » tables
- Commit trims: Apply each Trim table to the F & I table and reset the F Trim tables.

Menu "Map"

- Open: open a map from the TuneECU folder.
- Import table PCIII/V : Import a table PCIII or V in the trim tables.
- Information : Display the "Infos" / Comments from the map
- Parameters: Miscellaneous setting for the Map (Rev limiter, SAI, O2 sensor, speed correction ...)
- Parameters / Devices: Allow to active or deactivate for the map the « devices » (o2 Sensors, SAI...)



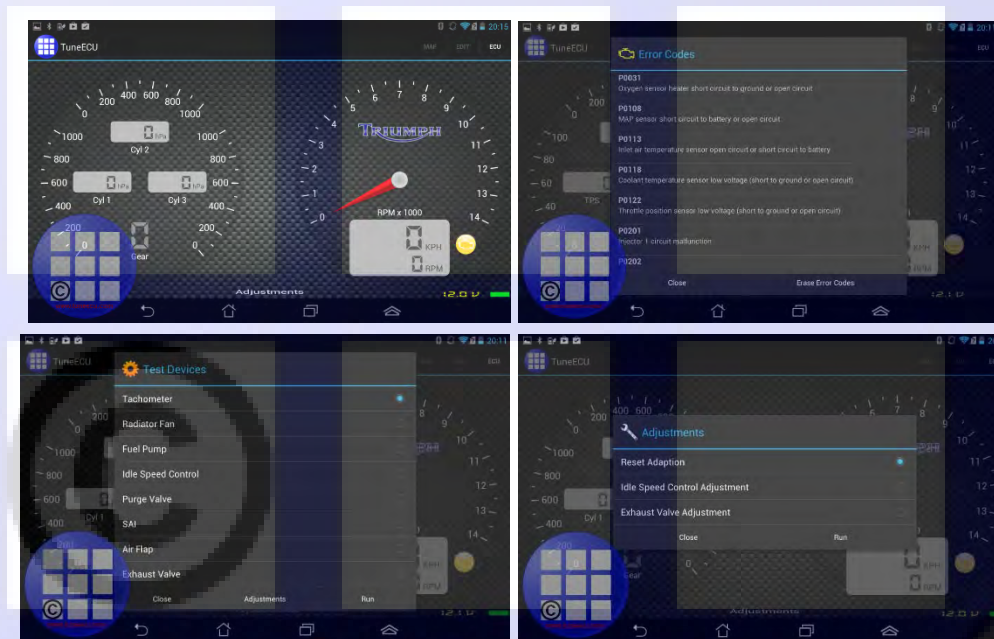
Diagnostics Screen:



Menu “ECU”

- Connect / Disconnect: Connect or disconnect to the ECU.
- Error Codes: Display / Erase the error codes stored in the ECU
- Information: Information about the ECU (VIN, Serial number, Map number)

Adjust Screen:



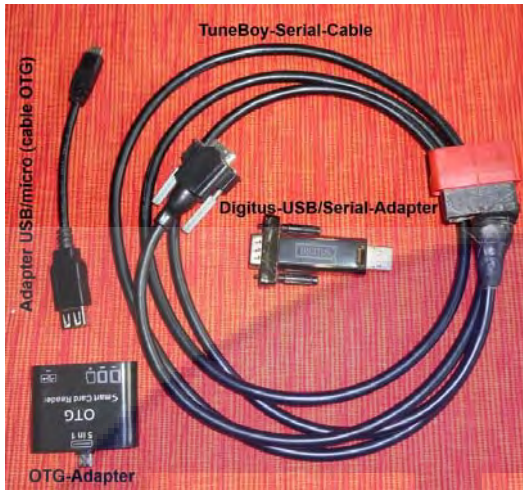
Menu “ECU”

- Connect / Disconnect: Connect or disconnect to the ECU.
- Error Codes: Display / Erase the error codes stored in the ECU
- Tests & Adjustments: Test components (fuel pump, radiator fan, etc...)
- Adjust : Devices adjustments (Exhaust valve, Idle speed, ...)

The left gauge shows the vacuum values for the cylinders to allow the butterfly synchronization only for Keihin ECUs.

PS: Not all features are available on all motorcycles

Appropriate equipment:



Technical Support

Your must enter a valid email address in the contact form, otherwise no answer is possible.

© Copyright :

Copying or printing of this document is authorized ONLY for personal and private use. Any other use is strictly prohibited without prior authorization from Thomas L. or Alain Fontaine. Any use and distribution of elements of the website or software for commercial purposes, and any modification, reuse or transfer of these items to another site is prohibited.

All care has been taken in the creation of this document, however, the author cannot guarantee the completeness and accuracy of this information.